

Low Voltage Stackable Battery

5KW output power, supporting 4 clusters in parallel, household micro-grid, touching LCD, and supporting screen selection protocols.



▲ 此图片仅供参考,以实物为准!



Thin stack design



LED lights display the parameters of the equipment in real time



Intelligent battery management system



Modular structure for easy installation



Support a variety of communication protocols, support RS485, RS232, CAN etc

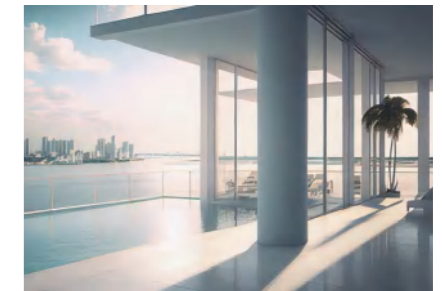
Basic Parameters	2-module	3-module
model	ESS-YT-512200	ESS-YT-512300
Number of battery parallel	2	3
Rated energy	10.24KWh	15.36KWh
Dimension (mm)	6000*1125*160	6000*1575*160
Rated voltage	51.2V	51.2V
Rated Capacity	200Ah	300Ah
Rating charging and discharge multiplied	0.5C	0.5C
Depth of discharge	90%	90%
Voltage work	43.2-58.4V	43.2-58.4V
Output Power	5KW	5KW
Communication Interface	CAN/485	CAN/485
Cycles	>6000, 25°C/77°F, 80%DOD	>6000, 25°C/77°F, 80%DOD
Protection level	IP21	IP21
cooling method	Natural cooling	Natural cooling
Run temperature range	-20-55°C	-20-55°C
Storage temperature	-15-40°C	-15-40°C
Relative humidity	0-90%RH	0-90%RH
认证标准 Certification standards	CE	CE



Household



Company



Hotel